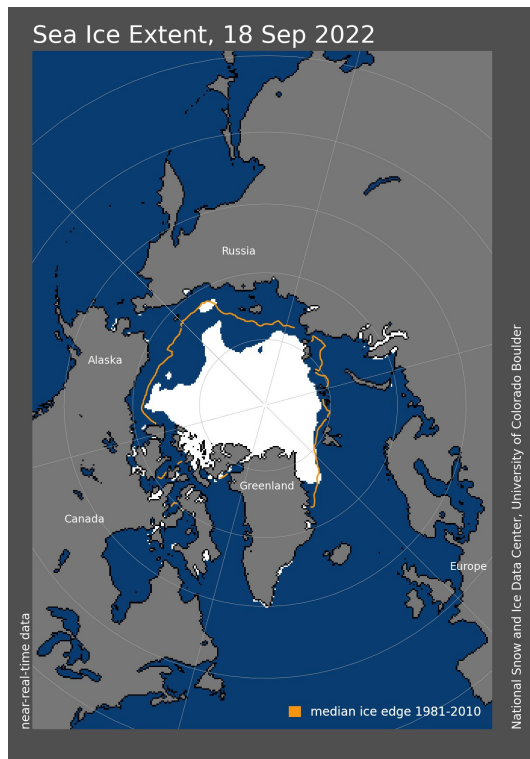
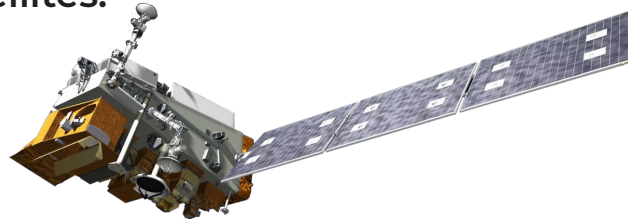




Learn more about: The Arctic



The **Arctic** is the part of the world north of the Arctic Circle (66.5° latitude). The **Arctic Ocean** is in the middle of the Arctic. The amount of ice on top of the Arctic Ocean varies seasonally and over time. Annually, the **largest amount of sea ice** is in March and the **smallest amount of sea ice** is in September. NOAA observes the amount of sea ice with satellites.



NOAA uses ships to create navigational charts of the Arctic, and research animal populations on land and in the water.



NOAA has many other tools. **Drones** are flown to collect atmospheric data. **Sail Drones** sail on the water and collect air and water measurements. **Buoys** stay in the water and also collect air and water data, as well as sea ice motion. NOAA also monitors animal populations.



In 2022 the smallest extent of sea ice occurred on September 18th. Here you can see sea ice on that day compared with historic median ice edge.

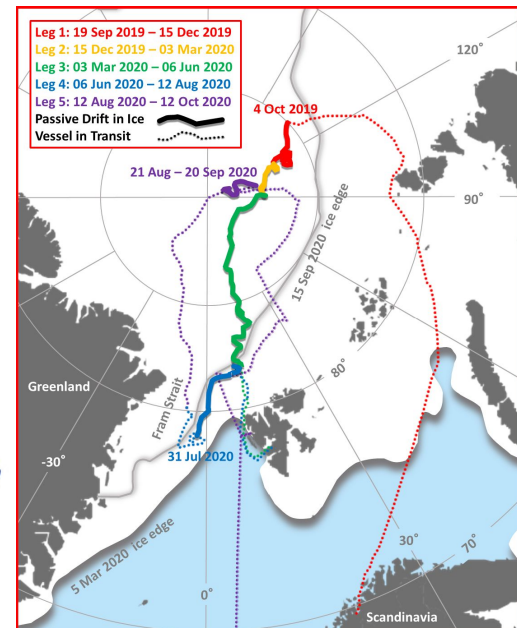


NOAA Boulder

come be BOLD with us



The **MOSAïc Expedition** included 442 scientists, experts and crew members from 20 countries.



MOSAïc left Norway in September 2019 and spent 300 days embedded in a drifting ice floe. An additional 30 were spent on a second ice floe.



Scientists studied the **ice**,



the **water** under the ice,



and the **air** above.

