



The Speed of Wind

How fast can you make the wind blow? Use a handheld anemometer and compare the number with the scale below.

Try it!

Turn on the handheld anemometer so that it reads 0.0.

Make sure the anemometer is measuring in miles per hour so you can compare to the wind scale.

Hold the anemometer close to your mouth, a couple inches away.

Blow into the fan blades of the anemometer.

4-7mph	Light breeze	Wind can be felt on your face.	
8-12mph	Gentle breeze	Leaves are in constant motion.	
13-18mph	Moderate breeze	Dust and paper blow around.	
19-24mph	Fresh breeze	Small trees start to sway.	
25-31mph	Strong breeze	Large branches move around.	
32-38mph	Near Gale	Larger trees start to sway.	
39-46mph	Gale	Twigs break off trees.	
47-54mph	Severe Gale	Some damage to buildings.	
55-63mph	Storm	Trees fall down.	
64-72mph	Violent Storm	Widespread building damage	
over 72mph	Hurricane Force	Widespread devastation.	

How fast can wind blow on earth?



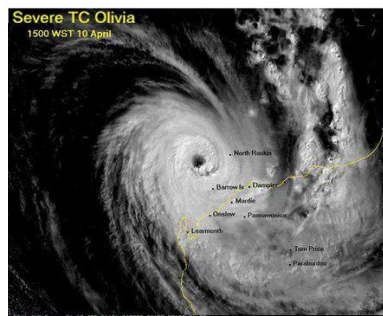
231 mph

Record Wind Speed in US
Mount Washington, NH
April 12, 1934



253 mph

Record Wind Speed in world
Cyclone Olivia on Barrow Island,
Australia
April 10, 1996



300 mph

Unofficial Highest Wind
Measured Using Doppler Radar
Bridge Creek-Moore Tornado, OK
May 3, 1999

